

# PBA BADGER 2016



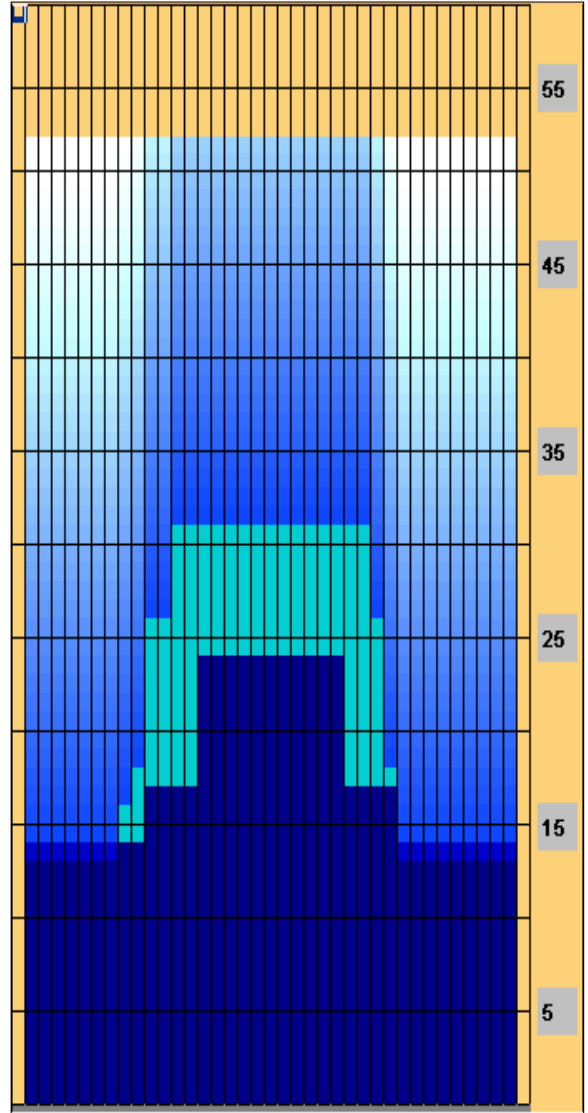
**Oil Pattern Distance:** 52 Feet      **Reverse Brush Drop:** 40 Feet      **Oil Per Board:** 50 uL  
**Forward Oil Total:** 21.05 mL      **Reverse Oil Total:** 3.9 mL      **Volume Oil Total:** 24.95 mL  
**Forward Boards Crossed:** 421 Boards      **Reverse Boards Crossed:** 78 Boards      **Total Boards Crossed:** 499 Boards

	Start	Stop	Loads	Speed	Crossed	Start	End	Feet	T.Oil
1	2L	2R	8	14	296	0.0	13.8	13.8	14800
2	9L	11R	1	18	21	13.8	16.3	2.5	1050
3	10L	11R	1	18	20	16.3	18.8	2.5	1000
4	11L	12R	3	18	54	18.8	26.4	7.6	2700
5	13L	13R	2	18	30	26.4	31.5	5.1	1500
6	2L	2R	0	26	0	31.5	52.0	20.5	0

	Start	Stop	Loads	Speed	Crossed	Start	End	Feet	T.Oil
1	2L	2R	0	30	0	52.0	24.0	-28.0	0
2	15L	15R	2	26	22	24.0	16.7	-7.3	1100
3	11L	11R	1	22	19	16.7	13.6	-3.1	950
4	2L	2R	1	18	37	13.6	11.1	-2.5	1850
5	2L	2R	0	14	0	11.1	0.0	-11.1	0

**Conditioner:**  
 Type In or Select One  
**TransferType:**  
 Type In or Select One

- Forward
- Reverse
- Combined
- Buff



Item	3L-7L:18L-18R	8L-12L:18L-18R	13L-17L:18L-18R	18L-18R:17R-13R	18L-18R:12R-8R	18L-18R:7R-3R
Description	Outside Track:Middle	Middle Track:Middle	Inside Track:Middle	Middle: Inside Track	Middle:Middle Track	Middle:Outside Track
Track Zone Ratio	2.11	1.58	1.04	1.04	1.76	2.11

